

## Green Star – Office Interiors v1.1

### Materials

#### Mat-3 Walls and Partitions

Points Available	Points Claimed	CIR Submitted
2	0	N
3	3	N

#### Credit Criteria

Up to two points are awarded where it is demonstrated that the area of built zones meets the following requirements:

- 1 point where built zones represent < 15% of the NLA;
- 2 points where built zones represent < 5% of the NLA.

Up to three points are awarded where it is demonstrated that the walls and partitions used in the tenancy fitout have a reduced environmental impact as determined by the Mat-3 Walls and Partitions Calculator. Maximum points can only be obtained if information about all the walls and partitions in the tenancy fitout is provided.

#### Documents Provided

✓	A copy of the completed Mat-3 walls and partitions Calculator, Materials Calculators Output Sheet
---	---

New

PT1, PT2, PT3 MK10 partitions

✓	Information from the walls and partitions supplier(s) quantifying all walls and partitions supplied;
✓	Information from the walls and partitions manufacturer(s), including working calculations to support the 'Eco Preferred Content' claimed
✓	A copy of the manufacturer's warranty for each walls and partitions type;
✓	A copy of the manufacturer's Environmental Management System (EMS) Manual's 'Table of Contents' or documentation that demonstrates compliance with the EMS credit requirements detailed in 'Additional Guidance';
✓	Where the manufacturer's EMS is ISO 14001:2004 certified, a copy of the ISO 14001 :2004 certification relevant to the walls and partitions being assessed;
✓	A copy of the manufacturer's 'Product Stewardship' agreement/contract demonstrating compliance with the credit requirements detailed in 'Additional Guidance';
✓	A statement from the manufacturer confirming that the walls and partitions is modular, including a description (which may include diagrams/pictures) of how the walls and partitions complies with the credit requirements detailed in 'Additional Guidance';

## Green Star – Office Interiors v1.1

✓	A statement from the manufacturer confirming that the walls and partitions is 'Designed for Disassembly', including a description (which may include diagrams /pictures) of how the walls and partitions can be disassembled identifying the percentage of the walls and partitions (by mass) that meets the credit requirements detailed in 'Additional Guidance'.
✓	Information from the sub-contractor confirming that the walls and partitions supplied were installed in the tenancy fitout.

### Discussion

- PT1, PT2 and PT3 are all the same partitions from Schiavello MK10 System. Therefore, the information has only been provided once in this credit.

1	New	Schiavello	PT1 - MK10 System
2	New	Schiavello	PT2 - MK10 System
3	New	Schiavello	PT3 - MK10 System

# Green Star - Office Interiors v1.1

Tenancy Fitout:

## Mat-3 Walls and Partitions Calculator

Total Length of Walls and Partitions within the Fitout

45 m

Points Awarded for this Credit

3

					Resource Utilisation		Management							Reusability			Product Score (%)
	Type of Walls and Partitions	Name of Walls/ Partitions Supplier	Brief Description of Walls and Partitions	Length of Wall or Partition (m)	Eco Preferred Content	Durability	EMS?	EMS ISO 14001 Certified?	EMS Includes?				Product Stewardship	Modular	Designed for Disassembly		
									Waste Minimisation	Energy	Emissions	Materials Minimisation					
1	New	Schiavello	PT1 - MK10 System	14	<5%	≥10yrs	Yes	Yes	Yes	Yes	Yes	Yes	Yes	Yes	≥90%	83	
2	New	Schiavello	PT2 - MK10 System	22	<5%	≥10yrs	Yes	Yes	Yes	Yes	Yes	Yes	Yes	Yes	≥90%	83	
3	New	Schiavello	PT3 - MK10 System	9	<5%	≥10yrs	Yes	Yes	Yes	Yes	Yes	Yes	Yes	Yes	≥90%	83	
4																	
5																	
6																	
7																	
8																	
9																	
10																	
11																	
12																	
13																	
14																	
15																	

### Notes:

Walls and partitions are assessed across three environmental impact categories, as follows:

- 'Resource Utilisation' which assesses the walls/partitions:
  - Eco Preferred Content (EC); and
  - Durability (DU).
- 'Management' which assesses:
  - the walls/partitions manufacturer's Environmental Management System (EMS); and
  - Product Stewardship (PS).
- 'Reusability' which assesses whether the walls/partitions are:
  - Modular (MO); and/or
  - Designed for Disassembly (DD).

Each of the environmental impact categories are weighted equally:

Total Score = EC + DU + EMS + PS + MO + DD.

Maximum Score = 10 + 10 + 10 + 10 + 10 + 10

The number of points determined by the Mat-3 Walls and Partitions Calculator is based on a total score out of 60 for each wall/partition type and then weighted according to the length of wall/partition as a fraction of total walls/partitions.

The final score is provided in the Materials Calculators Output Sheet.

# Green Star - Office Interiors v1.1

Tenancy Fitout:

## Materials Calculators Output Sheet

### Points Allocation Summary

	Workstations	Floor Coverings	Walls and Partitions	Chairs	Tables	Storage Units	Joinery	Total
Maximum No. Points Available	7	5	3	3	1	1	1	21
Available Points*	7	5	3	3	1	1	1	21
Points Awarded**	6	5	3	3	1	1	1	20

\*(based on fraction of items specified in the data input sheet compared to total specified within the fitout).

### Workstations

Amount	
Total within Fitout	55
Total from Data Input Sheet	55
Reused	12
Fixed	0
Loose	43
Environmentally Innovative	0

### Floor Coverings

Amount	
Total within Fitout	804 m <sup>2</sup>
Total from Data Input Sheet	804 m <sup>2</sup>
Reused	0 m <sup>2</sup>
Exposed Concrete	140 m <sup>2</sup>
Carpet	0 m <sup>2</sup>
Timber	0 m <sup>2</sup>
Resilient	0 m <sup>2</sup>
Ceramic/Stone	0 m <sup>2</sup>
Other	0 m <sup>2</sup>
Environmentally Innovative	664 m <sup>2</sup>

### Walls and Partitions

Amount	
Total within Fitout	45 m
Total from Data Input Sheet	45 m
Reused	0 m
New	45 m
Environmentally Innovative	0

### Chairs

Amount	
Total within Fitout	148
Total from Data Input Sheet	148
Reused	44
Task	0
Meeting Room	0
Breakout Space	0
Other	0
Environmentally Innovative	104

### Tables

Amount	
Total within Fitout	21
Total from Data Input Sheet	21
Composite Wood	18
Environmentally Innovative	0
Glass	0
Metal	0
Plastic	0
Reused	3
Timber	0

### Storage Units

Amount	
Total within Fitout	17
Total from Data Input Sheet	17
Reused	0
Compactus	0
Composite Wood	0
Timber	0
Metal	0
Other	0
Environmentally Innovative	17

### Joinery

Amount	
Total within Fitout	35.4 m
Total from Data Input Sheet	35 m
New	35 m
Reused	0 m
Environmentally Innovative	0 m

### Notes:

\* Points Available = number of items specified in the data input sheet x total items specified within the fitout

\*\* Points Awarded = Sum of the Weighted Score x Points Available.

\*\* Weighted Score = product score x (no of items/total items specified in the data input sheet).



## Schiavello Project Interiors Pty Ltd

31 – 49 Queensbridge St, Southbank Vic 3006 PO Box 250 Tullamarine Vic 3043 Australia  
Tel 03 9674 1550 Fax 03 9674 1666  
ABN 94 119 954 399

Project: Green Building Council of Australia – Sydney Office  
Address: L15, 179 Elizabeth Street, Sydney

### Partitions

Stipulate the name of the partitions supplied:	<b>MK10</b>
Stipulate the number of lineal metres of partitions supplied:	<b>45</b>

### ENVIRONMENTALLY INNOVATIVE

Yes or No

Does the partition system have GECA certification, components that have GECA certification or environmentally innovative content?	<b>No</b>
---	-----------

If the partition is third party certified by an organisation recognised by the GBCA for its environmental merit please provide the certificate. An example of this is the Good Environmental Choice Australia System (GECA)

### CONTENT

If the specified item contains organic certified products, FSC timber or other third party certified material (eg GECA) please fill in the following table: **N/A**

Component	Material	Weight	% of organic, FSC timber or other third party certified component	Eco preferred component weight
Please fill in the relevant boxes below as required to indicate 100% of the workstation components. Add any additional items as required				
Lining	<b>10mm SE Plasterboard</b>		<b>0%</b>	
Framing	<b>Aluminium</b>		<b>0%</b>	
Glazing	<b>6.38 Clear Laminated</b>		<b>0%</b>	
Skirting	<b>Aluminium</b>		<b>0%</b>	



## Schiavello Project Interiors Pty Ltd

31 – 49 Queensbridge St, Southbank Vic 3006 PO Box 250 Tullamarine Vic 3043 Australia  
Tel 03 9674 1550 Fax 03 9674 1666  
ABN 94 119 954 399

Where an item has organic, FSC timber or other third party certified components (GECA) please provide certificates and evidence of the quantity of material which was provided from the manufacturer.

N/A

### WARRANTY

Please provide confirmation of the warranty period for these storage units:

Warranty period	10years
-----------------	---------

### ENVIRONMENTAL MANAGEMENT SYSTEMS

	Yes or No
Do you have an Environmental Management System?	YES

	Yes or No
Do you have ISO 14001:2004 which is relevant in the production of this chair?	YES

### PRODUCT STEWARDSHIP

	Yes or No
Are you prepared to take back the partition at the end of its service life for re-use, recycling or re-processing?	YES

### DESIGN FOR DISASSEMBLY

	Yes or No
Is the partition designed for disassembly?	YES

If yes what percentage of the unit is designed for disassembly as described below?

< 50%		≥50%		>90%	>90%
		≥90%			

### DESIGNED FOR MODULARITY

This partition system is designed as a modular system based on a standard dimension of 900mm. Please refer to brochure attached.



## Schiavello Project Interiors Pty Ltd

31 - 49 Queensbridge St, Southbank Vic 3006 PO Box 250 Tullamarine Vic 3043 Australia  
Tel 03 9674 1550 Fax 03 9674 1666  
ABN 94 119 954 399

PVC

Yes or No

Was PVC used in these storage units?

NO

TIMBER

Where timber has been used which has FSC content

INSTALLATION

Yes or No

Were the units outlined here installed  
at L15, 179 Elizabeth St Sydney for  
use by GBCA?

YES

Date: 14/08/08

Signed:

Please accept this as proof that **Schiavello Project Interiors** agree to take back this product, **MK10 Partition** for reuse, recycling or reprocessing at whatever time it is of no further use to the GBCA.

This contract is solely between **Schiavello Project Interiors** and **Green Building Council Australia** for the express purpose of ensuring that this product does not go to landfill.

Name: ADAM TERRILL, Schiavello Project Interiors

Date: 14/08/08

Signed:

Name: Romilly Madew, GBCA

Date: 20/8/08

Signed:

Rom adew



CERTIFIED QUALITY  
MANAGEMENT SYSTEM

ISO 9001

Accreditation number: S1220792AS



CERTIFIED  
ENVIRONMENTAL  
MANAGEMENT SYSTEM

ISO 14001

Accreditation number: E1510196AS



CERTIFIED SAFETY  
MANAGEMENT SYSTEM

AS/NZS 4801

Accreditation number: O1920859AS

## **Schiavello Systems (NSW) Pty Ltd** **Surry Hills NSW**

operates a Management System  
that complies with the requirements of

**AS / NZS ISO 9001:2000**  
**AS/NZS ISO 14001:2004**  
**AS/NZS 4801:2001**

As detailed in the accompanying Scope of Certification.

  
on behalf of the Board of Directors

Certification Number: 7178  
Certificate Number: 7178-111  
Issue Date: 6 December 2007





## SCOPE OF CERTIFICATION

**Certification Number: 7178**

**Schiavello Group of Companies**

1 Sharps Road  
TULLAMARINE VIC 3043

Phone: (03) 9330 8888

Fax: (03) 9330 8899

**Certification Standard:**

AS / NZS ISO 9001:2000  
AS/NZS ISO 14001:2004

Certification Date: 13 October 1995  
Certification Date: 19 January 2001

**Capability Statement:**

**Schiavello Systems (NSW) Pty Ltd**

69 Campbell Street  
SURRY HILLS NSW

Marketing, supply and installation of the following products and systems:

Systems furniture - panel and desk based  
Office partitions - full height, demountable  
Ergonomic free standing furniture  
Commercial chairs ranging from operators to executive  
Joinery - custom designed built-in and free standing  
Electrical accessories - uplighting and softwiring  
Provision of information Technologies and Telecommunications Infrastructure  
Shop drawings depicting layout development of product.

Issue Date: 6 December 2007  
Valid Until: 31 October 2010  
Page 1 of 1

  
on behalf of the  
Board of Directors

## **SCOPE OF CERTIFICATION**

**Certification Number: 7178**

**Schiavello Group of Companies**

1 Sharps Road  
TULLAMARINE VIC 3043

Phone: (03) 9330 8888

Fax: (03) 9330 8899

**Certification Standard:**

AS/NZS 4801:2001

Certification Date: 27 March 2006

**Capability Statement:**


**Schiavello Systems (NSW) Pty Ltd**

69 Campbell Street  
SURREY HILLS NSW

Marketing, supply and installation of the following products and systems:

Systems furniture - panel and desk based  
Office partitions - full height, demountable  
Ergonomic free standing furniture  
Commercial chairs ranging from operators to executive  
Joinery - custom designed built-in and free standing  
Electrical accessories - uplighting and softwiring  
Provision of information Technologies and Telecommunications Infrastructure  
Shop drawings depicting layout development of product.

Issue Date: 6 December 2007  
Valid Until: 31 March 2009  
Page 1 of 1

  
\_\_\_\_\_  
on behalf of the  
Board of Directors

This Scope of Certification remains the property of  
NCS International Pty Limited ACN 078 659 211

A wholly owned subsidiary of The National Association of Testing Authorities, Australia ACN 004 379 748

Schiavello Systems (NSW) Pty Ltd ABN 91 068 626 684  
69 Campbell Street Surry Hills NSW Australia 2010  
T +61 2 9211 3311 F +61 92123788

Certified ISO 9001:2000  
Quality Management System & ISO 14001  
Environmental Management System

[www.schiavello.com](http://www.schiavello.com)

# Schiavello

Schiavello will enter into a written Product Stewardship agreement with the purchaser to, subject to certain specific conditions, accept product returned to our Tullamarine, Victoria, main production facilities with the intention to re-use the product and/or component material and maximize the residual amount which is recycled. An annual public report will be available of the ultimate fate of the materials and products returned under these agreements.

In order to maximize the efficient use of resources it is important that clients indicate their wish to enter into a Product Stewardship agreement in the pre-tender stage of purchasing.

The conditions will generally include:

- That the customer returns the products to our Tullamarine Plant;
- That the products are in their original state not changed or re-finished and resulting from normal wear and tear;
- A specified minimum quantity of items;
- A specified maximum age of the product(s)



**Tony Schiavello**  
**Managing Director**

27/6/07

www.schiavello.com

## Re Product Stewardship,

### Green Building Council of Australia (GBCA), Sydney

#### 1. Product Stewardship

1.1 Schiavello will accept the return of Products at the end of their service life in order to recycle and re-use the Products on the following conditions:

- (i) a minimum number of 25 Products be returned per return;
- (ii) Schiavello will accept Products that are at the end of their service life or no more than 15 years has passed from the date of purchase of the Products, whichever is earlier;
- (iii) the Products are transported to Schiavello headquarters at Tullamarine, Victoria at GBCA's cost;
- (iv) the party wishing to enforce this clause is the original purchaser who acquired new Schiavello Products (the clause is non-transferable);
- (v) if any person other than an authorized Schiavello representative has carried out any disassembly, reconfiguration, assembly, maintenance or repair work on the Products, Schiavello product stewardship obligation is deemed null and void; and
- (vi) if there is any dispute as to whether the Products meet the requirements in this clause, Schiavello will have absolute discretion whether to accept the Products.

In this contract the following Product(s) are included in the provisions of this clause:

- Marina workstations, Marina Storage, System 45 Panels, Schitech softwiring
- Marina Meeting Tables
- QED Café Table

In this contract the following Product(s) are excluded from the provisions of this clause:

- Any furniture product not provided by Schiavello.

Signed for Schiavello Group

Jason Parry

**Contract Manager - Seating & Loose Furniture**



**schiavello**  
we create workplaces



m a n u a l

M K 1 0 S Y S T E M

ORIGINAL

COPY



SCI/M01-A

# TABLE OF CONTENTS

<b>Site Work Instructions on Fitout (Demountable Partitions)</b>	<b>3</b>
<b>Assembling a Fully Glazed Panel</b>	<b>4</b>
<b>MK10 Typical Partition Wall &amp; Door Elevation &amp; Codes</b>	<b>5</b>
<b>Glass Section Detail B &amp; C Type</b>	<b>6</b>
<b>Door Jamb Detail</b>	<b>7</b>
<b>Carpet Chair Installation for Door Jamb</b>	<b>8</b>
<b>MK10</b>	
<b>Sheet No.1</b>	<b>Wall Channel detail - Solid Partition 9</b>
<b>Sheet No. 2</b>	<b>Head Channel detail - Solid Partition 9</b>
<b>Sheet No. 3</b>	<b>Skirting detail - Solid Partition 10</b>
<b>Sheet No. 4</b>	<b>Head Channel detail - Glazed Partition 10</b>
<b>Sheet No. 5</b>	<b>Skirting detail - Fully Glazed Partition 11</b>
<b>Sheet No. 6</b>	<b>Sill Detail 12</b>
<b>Sheet No. 7</b>	<b>Full Height Door 12</b>
<b>Sheet No. 8</b>	<b>Wall Starter detail - Door Jamb 13</b>
<b>Sheet No. 9</b>	<b>Glass Infill Over Door 13</b>
<b>Sheet No. 10</b>	<b>Fully Glazed Corner Detail 14</b>
<b>Sheet No. 11</b>	<b>Solid/Solid Partition Junction 14</b>
<b>Sheet No. 12</b>	<b>Half Glass/Solid Partition Junction 15</b>
<b>Sheet No. 13</b>	<b>Fully Glazed Partition Junction 15</b>
<b>Sheet No. 14</b>	<b>Half Glass/Half Glass Partition Junction 16</b>
<b>Sheet No. 15</b>	<b>Door/Glass Partition Junction 16</b>
<b>Sheet No. 16</b>	<b>3-Way - Glass/Solid/Door 17</b>
<b>Sheet No. 17</b>	<b>Door/Solid Partition Junction 17</b>
<b>Sheet No. 18</b>	<b>Transom Height - Solid Panel 18</b>
<b>Sheet No. 19</b>	<b>Transom Height - Glazed Panel 18</b>
<b>Sheet No. 20</b>	<b>Transom Height - Door Head 19</b>
<b>Sheet No. 21</b>	<b>Chair Rail 19</b>
<b>Sheet No. 22</b>	<b>Alternative Glazing Transom Detail 20</b>
<b>Sheet No. 22a</b>	<b>Alternative Glazing Transom Detail 20</b>
<b>Sheet No. 23</b>	<b>135° Junction 21</b>
<b>Sheet No. 24</b>	<b>Stop End Detail 22</b>
<b>Sheet No. 24a</b>	<b>Alternative Stop End Details 22</b>



# WORK INSTRUCTION ON FITOUT DEMOUNTABLE PARTITIONS

- 1 Check with Site Manager that dilapidation survey of existing base building condition has been completed before any work commences.
- 2 Carpet Floor protection shall be taped at all joints, stretched and fixed at perimeter.
- 3 Partition set out shall be carried out on top of carpet floor protection.
- 4 Light seal shall be fixed to the back face of all ceiling track and wall starters.
- 5 Joiner / angle brackets shall be installed to reinforce all ceiling track junctions and corners.
- 6 Skirting retainer floor track shall be checked to make sure that clip-on skirting fits correctly prior to nailing down. Cut and return the floor track approximately 30mm back on each side of door opening. This is to enable the door frames to be screwed to the floor track once the door is hung.
- 7 Drill two 10mm holes in the bottom of each panel approximately 100mm from the edge of the panel and centre of panel thickness. Hole must be straight. A washer must be fitted between bottom rail and jacking bolt when bottom of panel is particle board
- 8 **ASSEMBLE PANELS**
  - a) **Solid Demountable Partitions.**

Clips or flats are to be nailed to the edges of solid panels at approximately 300mm centres.  
NOTE: Use 40mm plastic coated nails on pineboard frame.  
Use 50mm corrugated nails on solid pineboard panels.  
Use 25mm galvanised clouts on timber frame panels.  
Use screws where and if required.  
For further details refer to partition manual.
  - b) **Glazing Demountable Partitions.**

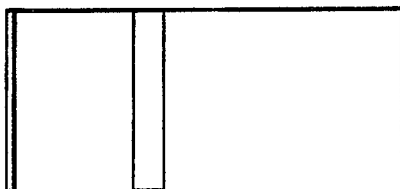
Where glazing applies to either part or full glass, refer to partition manual for identification of aluminium components. Drill aluminium frames to suit the measurement measured on site and given by the supervisor. Check thickness of glass and make sure that you insert into the aluminium glazing sections the correct glazing PVC. Screw transoms onto posts or flats to one side only. Then slip the glass in and screw the other flat or post onto the transom. For further details refer to partition manual.
- 9 Erect Panels and level by adjusting jacks as required.
- 10 Upon completion of door opening, make sure that the top of the transom is level then fit carpet chair to hinge side of door. Measure and cut the jamb, fit head first. Fit one small angle bracket to each side of jamb at mitres. When head is in place, slip jambs up into angle brackets. NOTE: Jambs must be reasonable tight.
- 11 **Fit Hinges into jambs.**

Top Hinge: 150mm down from top of door to top of hinge  
Bottom Hinge: 200mm up from bottom of door to bottom of hinge.  
Check specifications for a third or more hinge as required.  
Generally on a 2100HT door use two hinges.  
On a 2700HT door use three hinges.
- NOTE:**
  - a) If any door is over 35kg and the partition system is MK10 and next to the hinge side of the door is a glass panel, the top hinge must be a tight as possible, and just 50mm below top of door.
  - b) Fit one set of hinges and make a jig to keep all hinges at the same height.
  - c) Fit door - have 3mm clearance to top and sides. Allow 7mm at bottom from top of carpet pile.
- 12 Fit hardware at the height specified. If it is not specified it must be queried with the client.
- 13 Fit post insert tape on MK3 and MK5
- 14 Fit clip-on PVC or extruded aluminium skirting and fit pre-made skirting at all external corners, fix with contact adhesive.
- 15 Check all walls for any damage and repair. Doors / edges may have to be repolished. Also check aluminium sections for damage.
- 16 On completion of work, ease all doors, check all door hardware / furniture is operational and skirting fits tight to all wall faces.
17. Remove debris and clean.

# ASSEMBLING A FULLY GLAZED PANEL

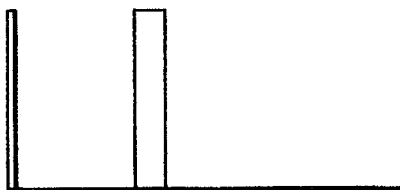
## STEP 1.

Screw the horizontal transoms onto one vertical clip at the specified locations.



## STEP 2.

Rotate the partition so that the vertical clip is resting on the floor and the open side is facing up.

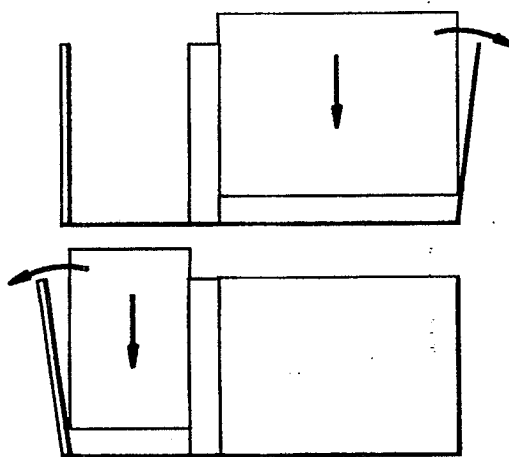


### HELPFUL HINT

Ensure the floor is reasonably level when constructing glazed partitions as it will ease the assembly procedure.

## STEP 3.

With the assistance of another worker, one on each end of the glass sheet, locate the glass by sliding it down between the open transoms. Repeat this procedure for the other glass section.

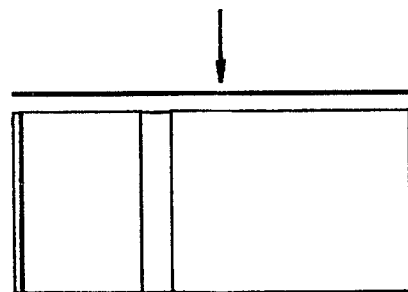


### HELPFUL HINT

To assist in locating the glass sheets into the partition, pull back the outside transom when locating each glass sheet this will prevent the corners of the glass sheet catching on the glazing PVC as it is slid down into position. To further aid the process, slightly blunten the corners of the glass sheets with glass pliers or an oil stone.

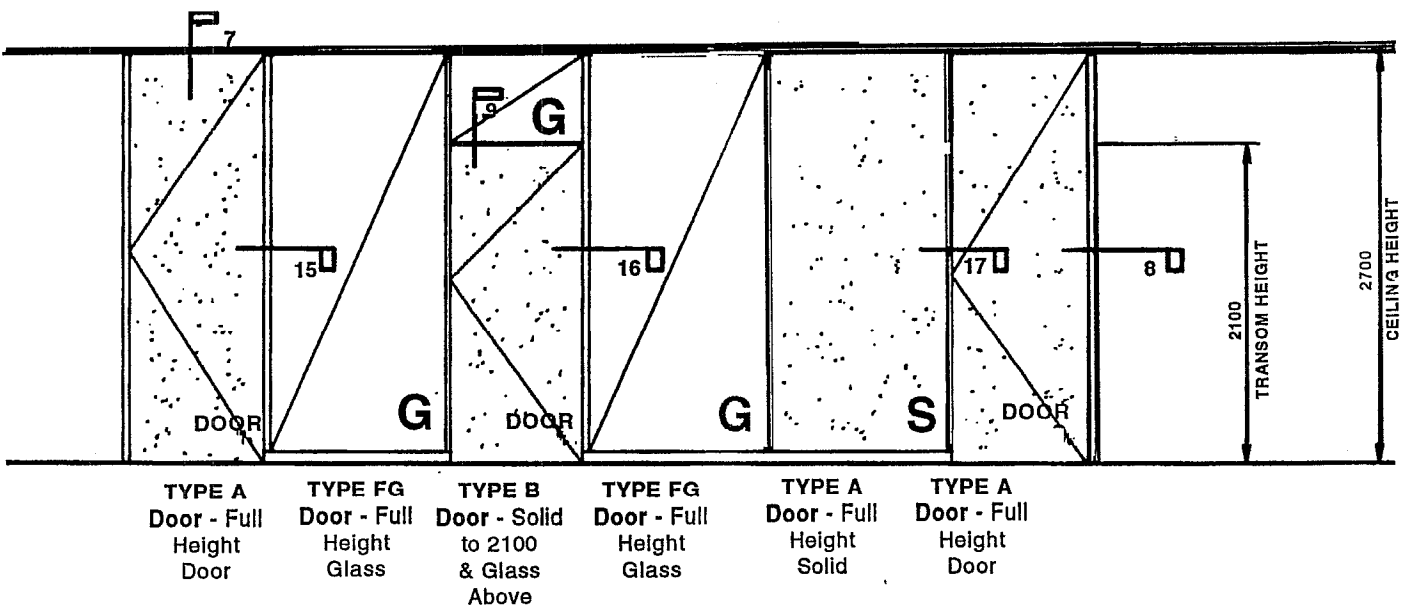
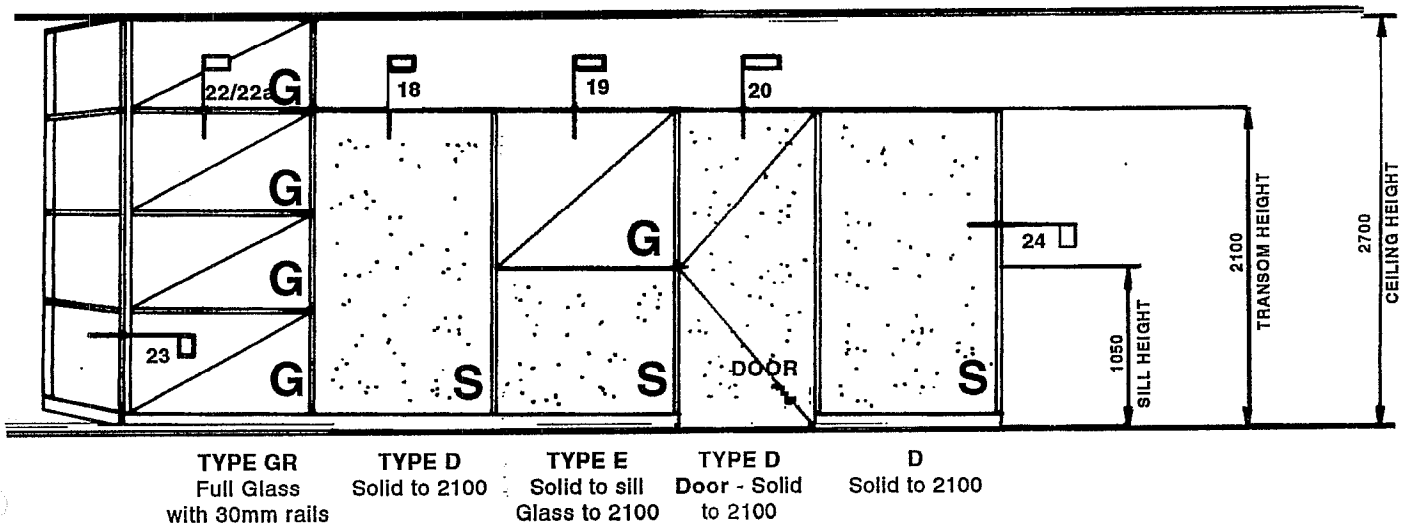
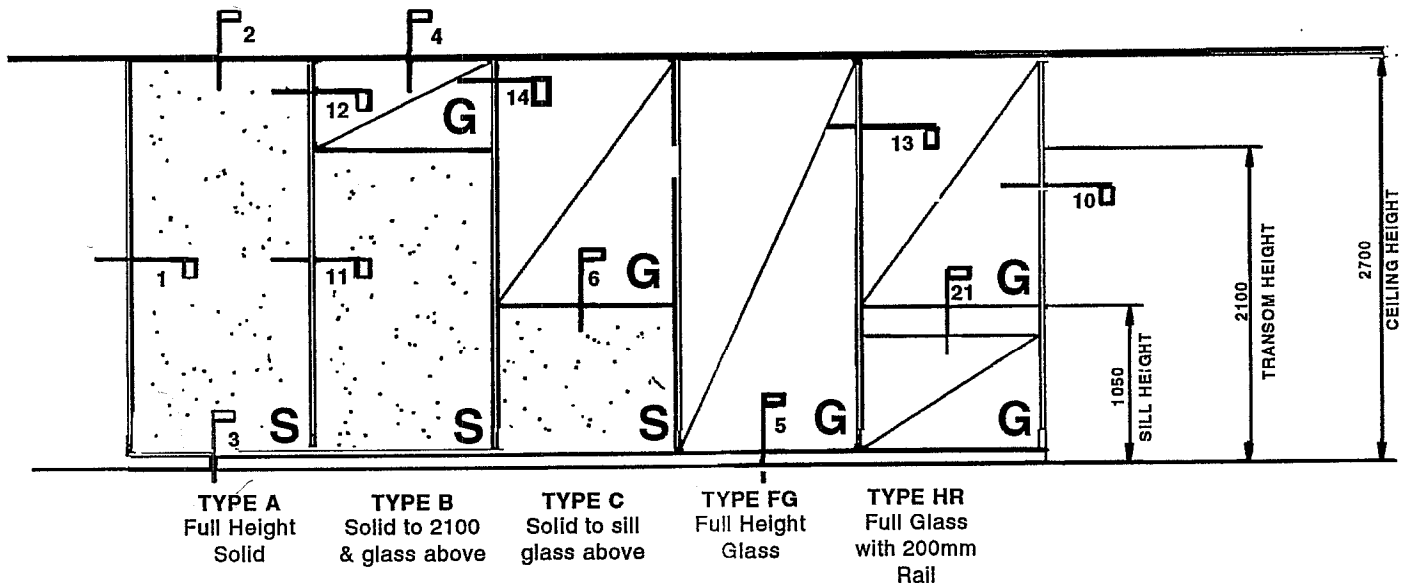
## STEP 4.

Once the glass sheets are located properly, fix the other vertical clip to the upfacing edge of the partition.

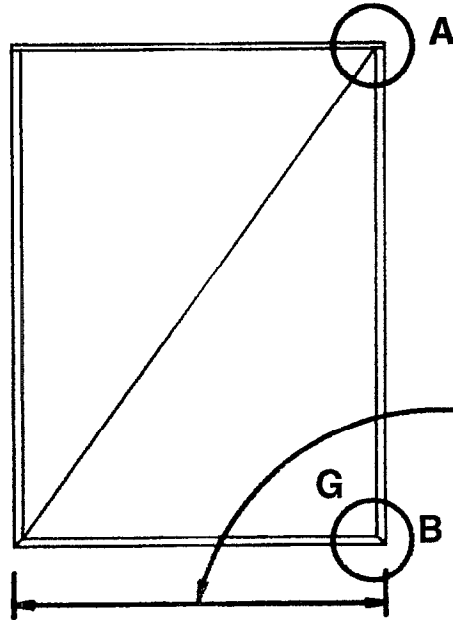




# TYPICAL PARTITION WALL & DOOR ELEVATIONS & CODES



# GLASS SECTION DETAIL B & C TYPE



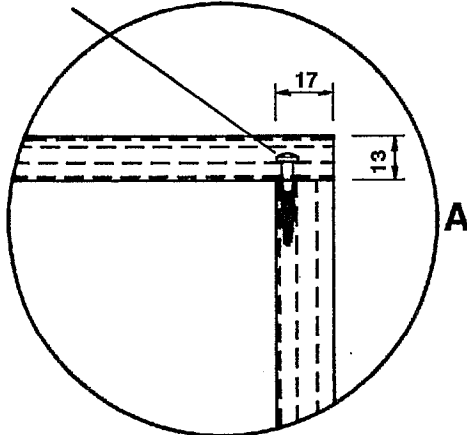
**END VIEW**

See Detail Below

**IMPORTANT NOTE:**

Check the width of the plaster batch available in the factory before determining the length the horizontal glazing transoms are to be cut.

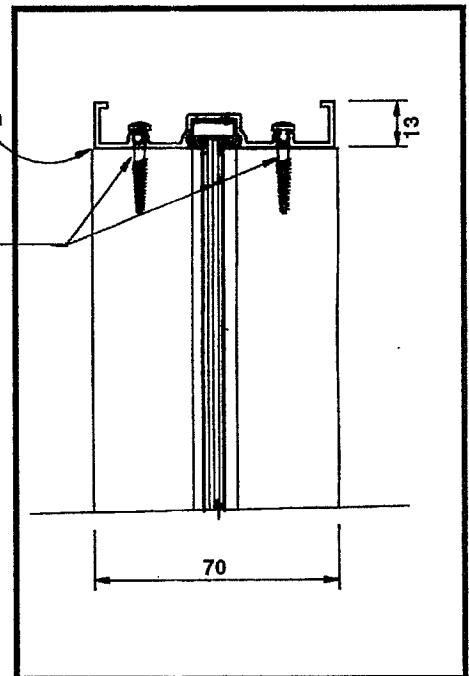
Fix transoms with  
25mm x 8# panhead screws



**NOTE:**

73mm wide transom stops at this point. To fix, screw down from horizontal glazing section

Fix transoms with  
25mm x 8# panhead screws.

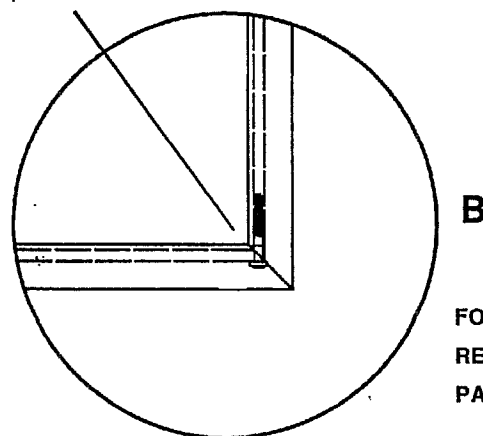


**END VIEW**

Detail of Section A

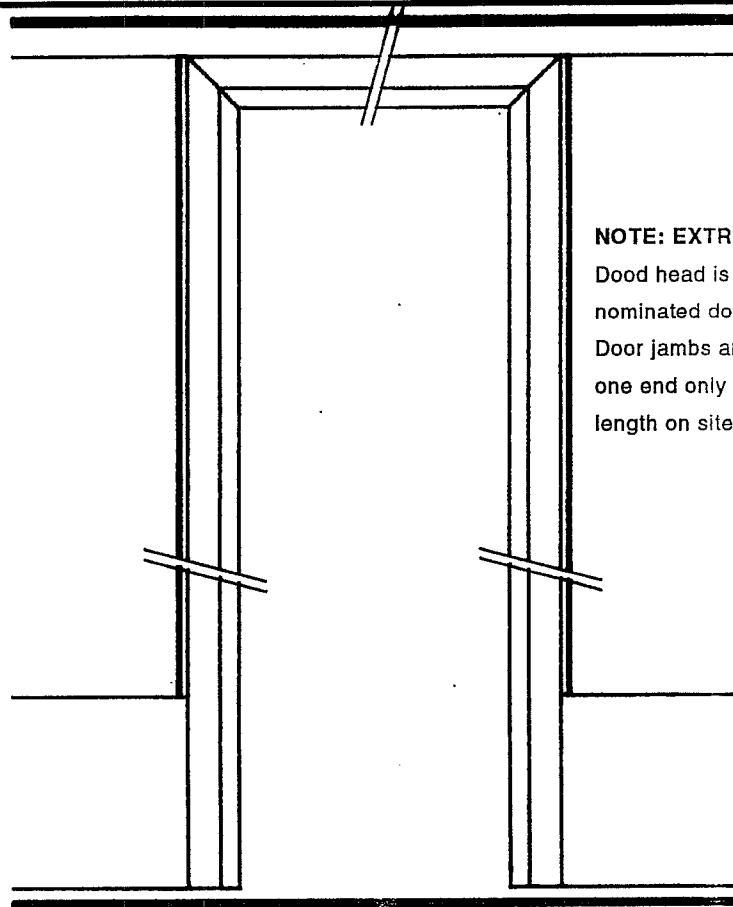
**FOR FURTHER INFORMATION  
REFER TO SHEET No. 4  
PAGE No. 11.**

Fix transoms  
with 25mm x 8#  
panhead screws.

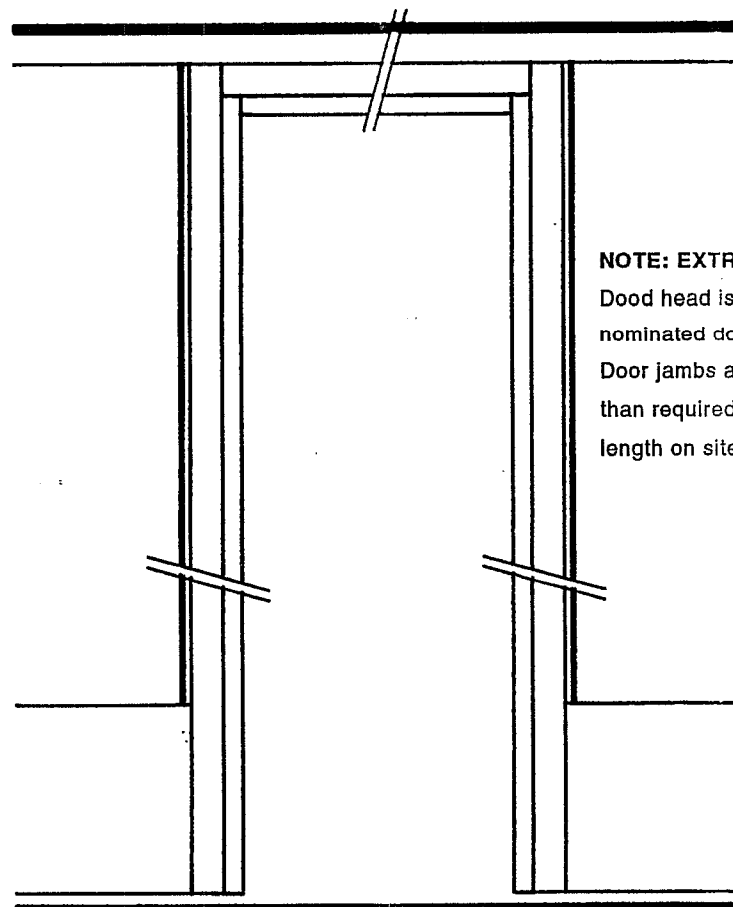


**FOR FURTHER INFORMATION  
REFER TO SHEET No. 6  
PAGE No. 13**

## MITRED DOOR JAMB DETAIL

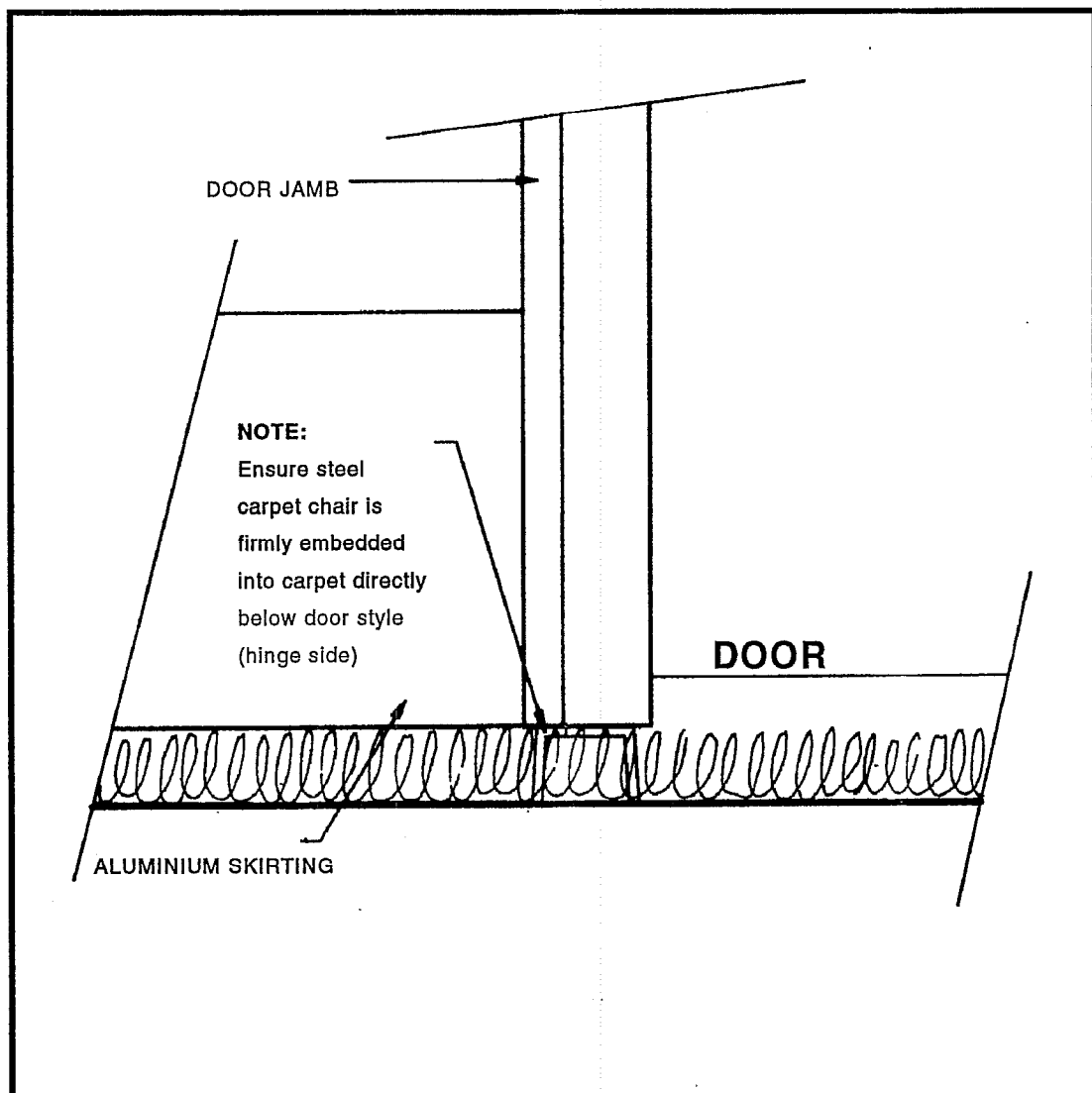


**NOTE: EXTRUSION U0458**  
Dood head is pre-mitred to suit nominated door width.  
Door jambs are pre-mitred on one end only and are cut to length on site.



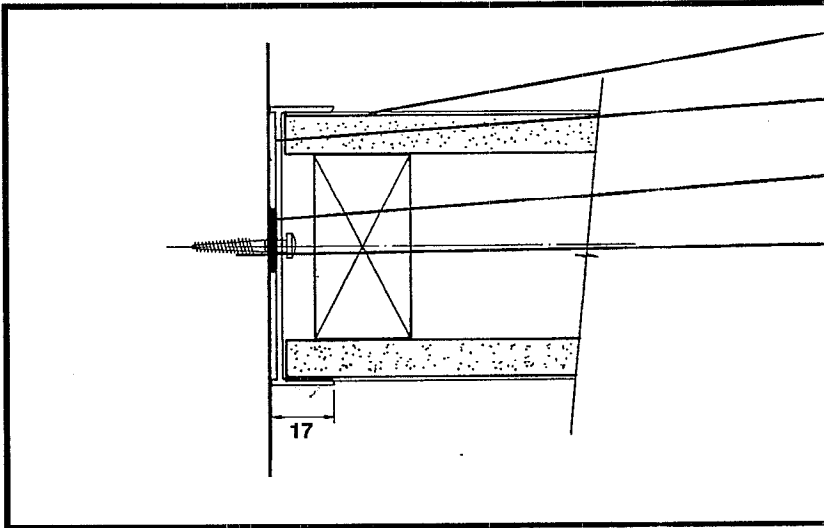
**NOTE: EXTRUSION U2021-R**  
Dood head is pre-cut to suit nominated door width.  
Door jambs are supplied longer than required and are cut to length on site.

## CARPET CHAIR INSTALLATION FOR DOOR JAMB



**WALL CHANNEL DETAIL SOLID PARTITION**

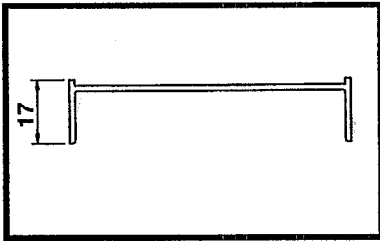
SHEET NO. 1



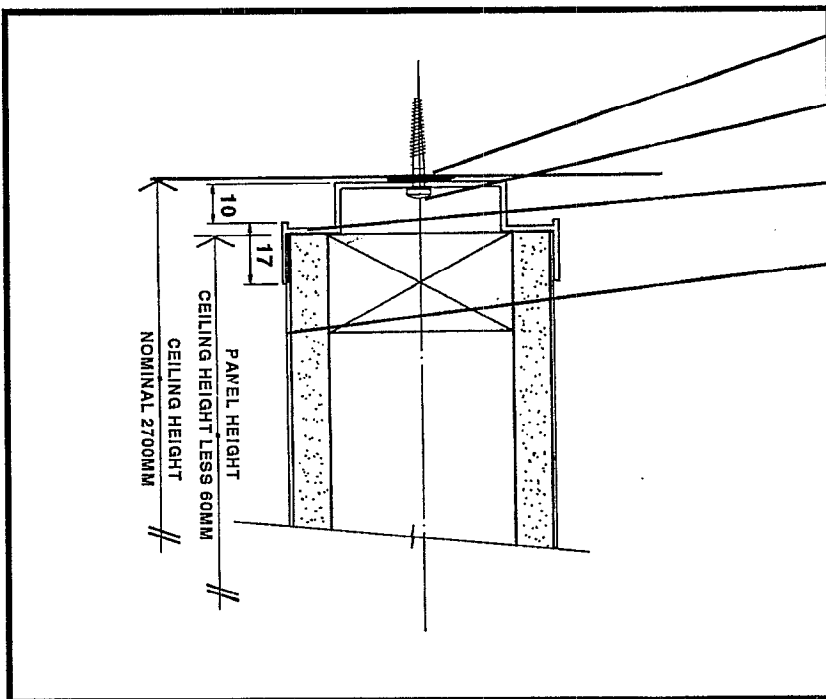
**PLATERBOARD LINING**  
Toggle & 25mm x 8# Panhead  
Screw.

## HEAD CHANNEL DETAIL SOLID PARTITION

SHEET NO. 2



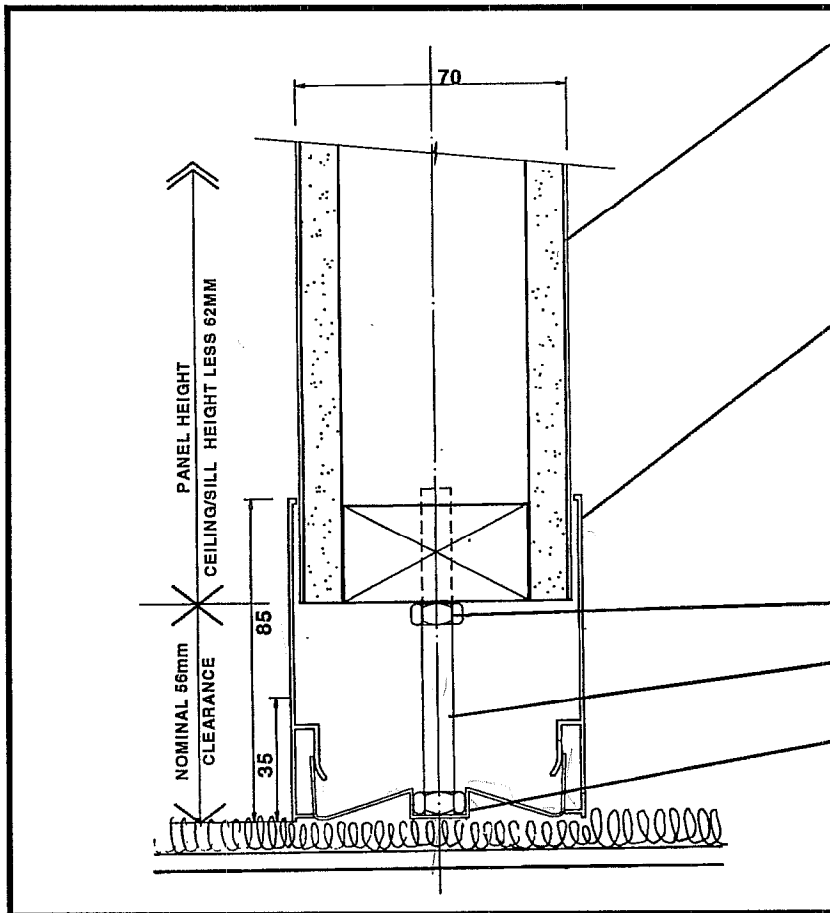
**Alternative head channel  
Extrusion No. T8957-R**



**10mm Plasterboard with selected architectural finish**

## SKIRTING DETAIL SOLID PARTITION

SHEET NO. 3



10mm Plasterboard with selected architectural finish

Various size and types of skirting. Refer to notes below.

85mm High aluminium skirting (as shown)  
Extrusion No. U1771

100mm H P.V.C.

100mm H Aluminium  
Extrusion No. U7607

10mm Hex nut

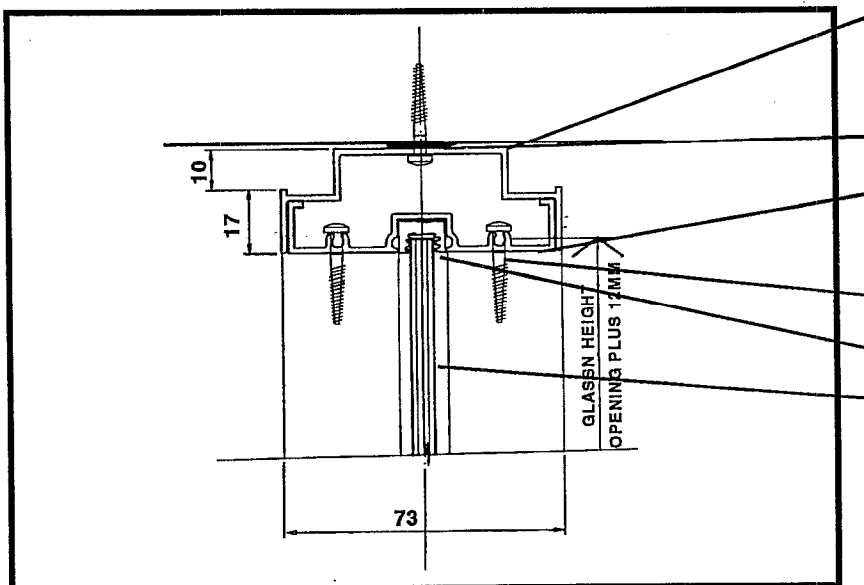
Jacking bolt 2 per panel  
100 x 10mm dia bolt

Floor channel fixed to concrete slab through carpet with 38mm concrete nails at 1000mm c.t.s.

**NOTE:** Minimum dimension of 35mm to fit skirting onto track

## HEAD CHANNEL DETAIL GLAZED PARTITION

SHEET NO. 4



Ceiling Channel fixed to ceiling with 25mm x 8# panhead screws at 1200mm c.t.s.

Extrusion No. U7658R

12 x 3mm Open cell grey foam

Extruded aluminium glazing section  
Extrusion No. T8956 - R

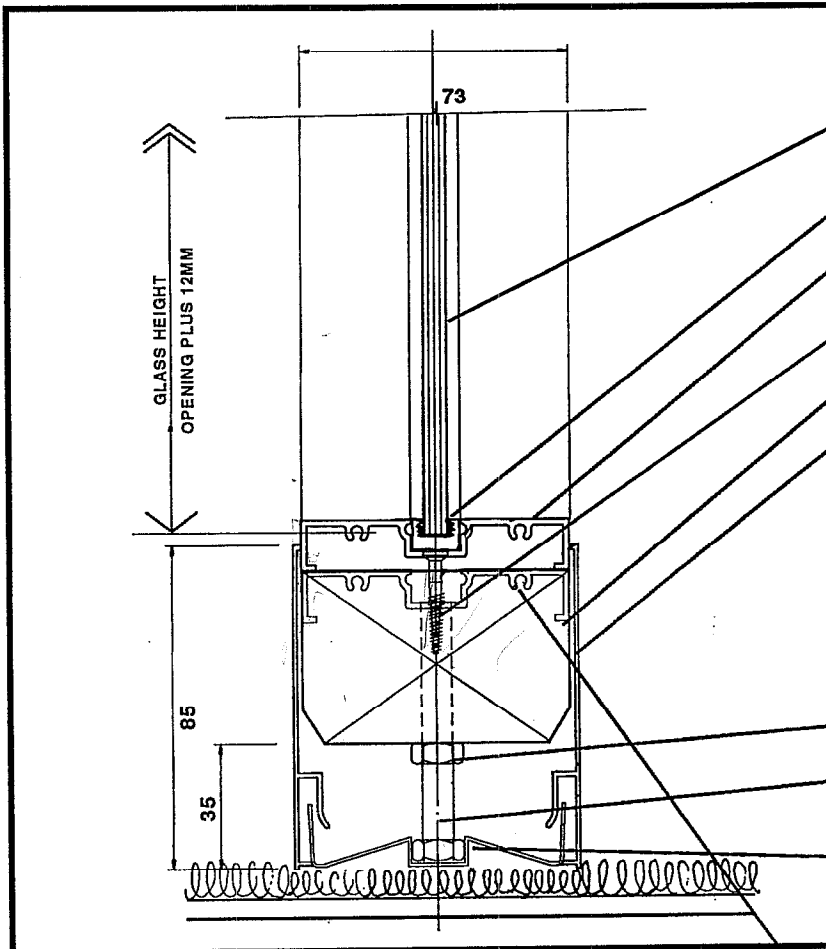
25mm x 8# Panhead screw

Glazing P.V.C.

Glass thickness to comply with A.S. 1288

# SKIRTING DETAIL FULLY GLAZED PARTITION

**SHEET NO. 5**



Glass thickness to comply with A.S. 1288

Glazing P.V.C.

Aluminium glazing section  
**Extrusion No. T8956 - R**

25mm Plaster screw

Customwood timber rail 70 x 40mm

Various size and types of skirting  
as follows

85mm High aluminium skirting (as  
shown)  
**Extrusion No. U1771**

100mm H P.V.C.

100mm H Aluminium  
**Extrusion No. U7607**

10mm Hex nut

Jacking bolt 2 per panel 75 x 10mm  
dia bolt

Floor channel fixed to concrete slab  
through carpet with 38mm concrete  
nails at 1000m c.t.s.

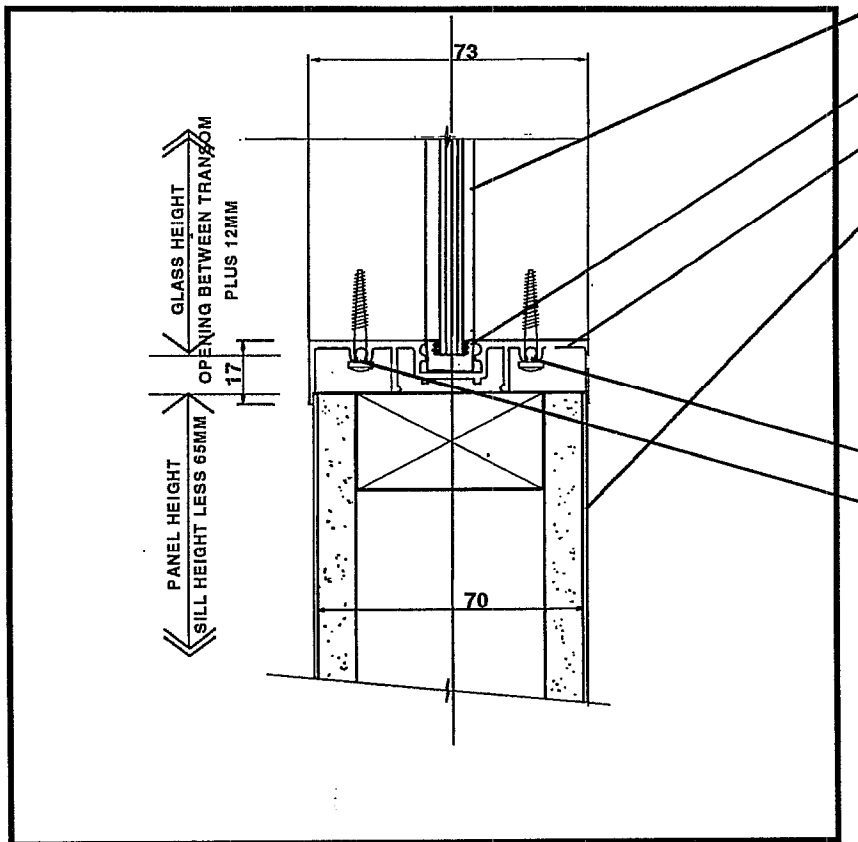
## NOTE:

Minimum dimension of 35mm to  
fit skirting onto track

If floor level deviates more than  
15mm then add on additional  
glazing section to prevent the  
timber from being exposed

## SILL DETAIL

SHEET NO. 6



Glass thickness to comply with A.S. 1288

Glazing P.V.C.

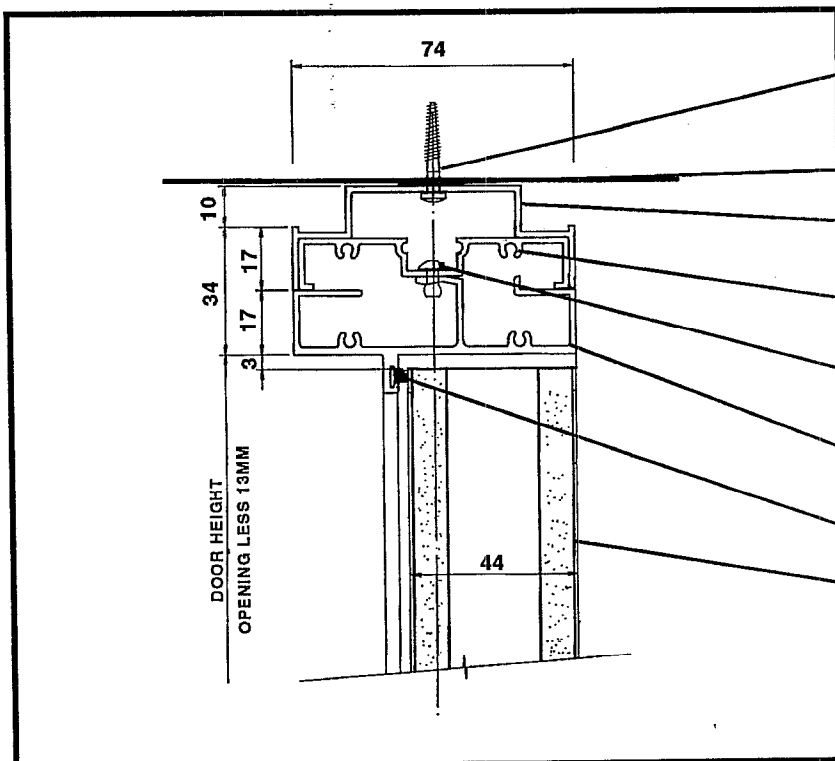
Glazing section  
Extrusion No. U1599 - R

10mm Plasterboard with selected architectural finish

25mm x 8# Panhead Screws

## FULL HEIGHT DOOR

SHEET NO. 7



Ceiling channel fixed to ceiling with 25mm x 8# panhead screws at 1200mm c.t.s.

12 x 3mm open cell grey foam

Shadowline head channel  
Extrusion No. U7658R

Aluminium glazing section  
Extrusion No. T8956

1/8" Pop rivets to fix glazing section to door head

Door jamb  
Extrusion No U2021-R

Wool pile draft stop

44mm Thick hollow core door with selected architectural finish

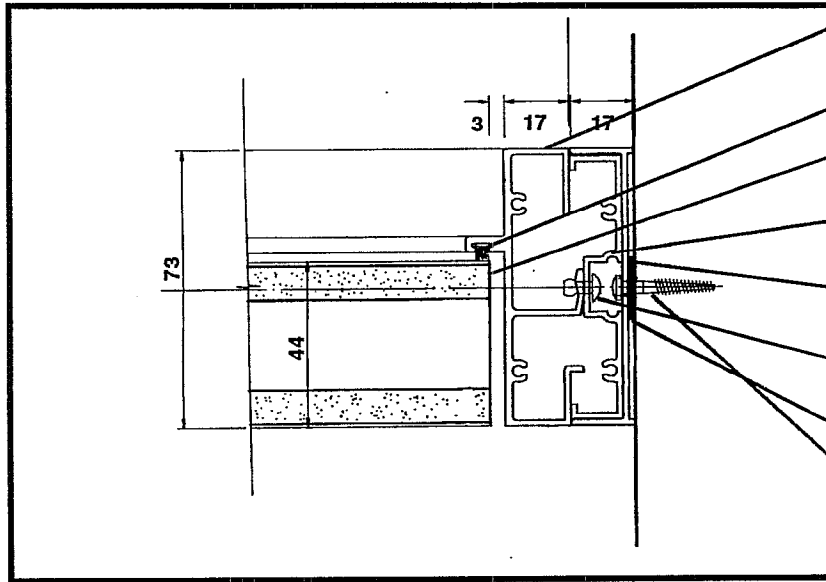
### NOTE:

Door head is butted with door jambs when using extrusion U2021-R. Refer to page 7.



## WALL STARTER DETAIL-DOOR JAMB

SHEET NO. 8



Door jamb  
Extrusion No. U2021-R

Wool pile draft stop

44mm Thick hollow core door with  
selected architectural finish

Aluminium glazing section  
Extrusion No. T8956

Wall starter  
Extrusion No. T8957-R

Pop rivets fixed at approx 400mm  
c.t.s.

12 x 3mm Open cell grey foam

Wall starter fixed to wall with:

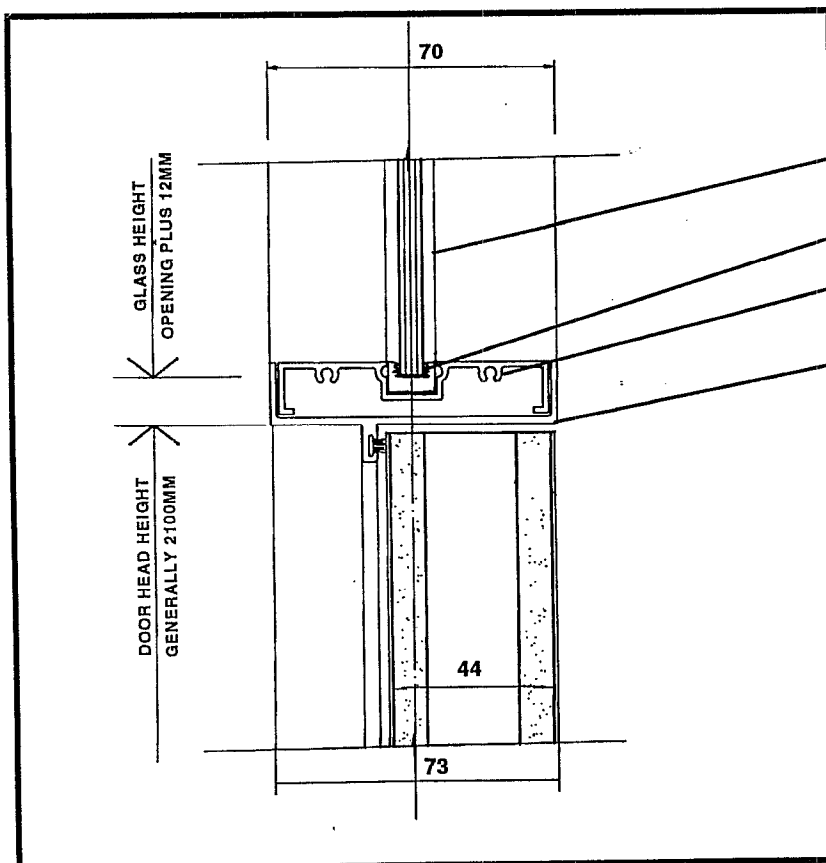
Concrete  
3/16" nylon tappot

Aluminium  
25mm x 8# panhead screw  
pop rivet where applicable

Platerboard Lining  
Toggle & 25mm x 8# panhead screw

## GLASS INFILL OVER DOOR

SHEET NO. 9



Glass thickness to comply with A.S.  
1288

Glazing P.V.C.

Aluminium glazing section  
Extrusion No. T8956-R

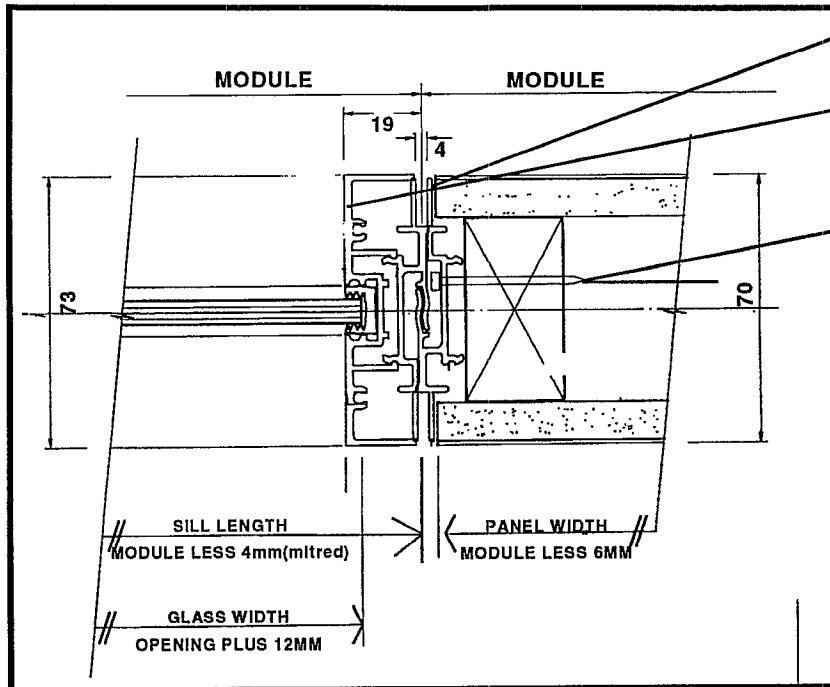
Door head  
Extrusion No. U0458

**NOTE:**  
Door head is milled with door  
jambs when using extrusion  
U0458. Refer to page 7.



# HALF GLASS/SOLID PARTITION JUNCTION

SHEET NO. 12



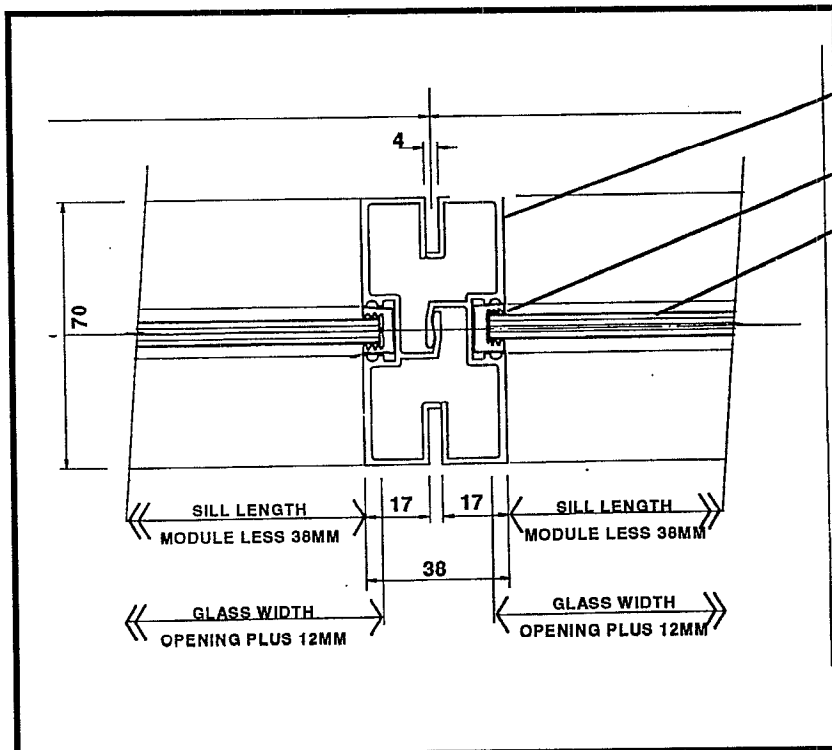
MK10 Aluminium clip  
Extrusion No. U5829

Glazing section  
Extrusion No. U1599R

38mm Process nail

# FULLY GLAZED PARTITION JUNCTION

SHEET NO. 13



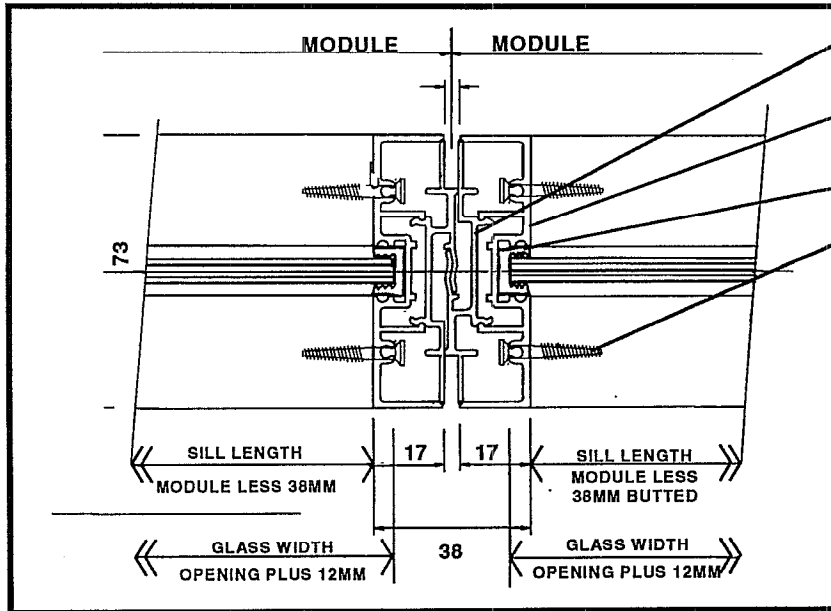
Glazing section  
Extrusion No. U4385

Glazing P.V.C.

Glass thickness to comply with  
A.S.1288

# HALF GLASS/HALF GLASS PARTITION JUNCTION

SHEET NO. 14



MK10 Aluminium clip  
Extrusion No. U5829

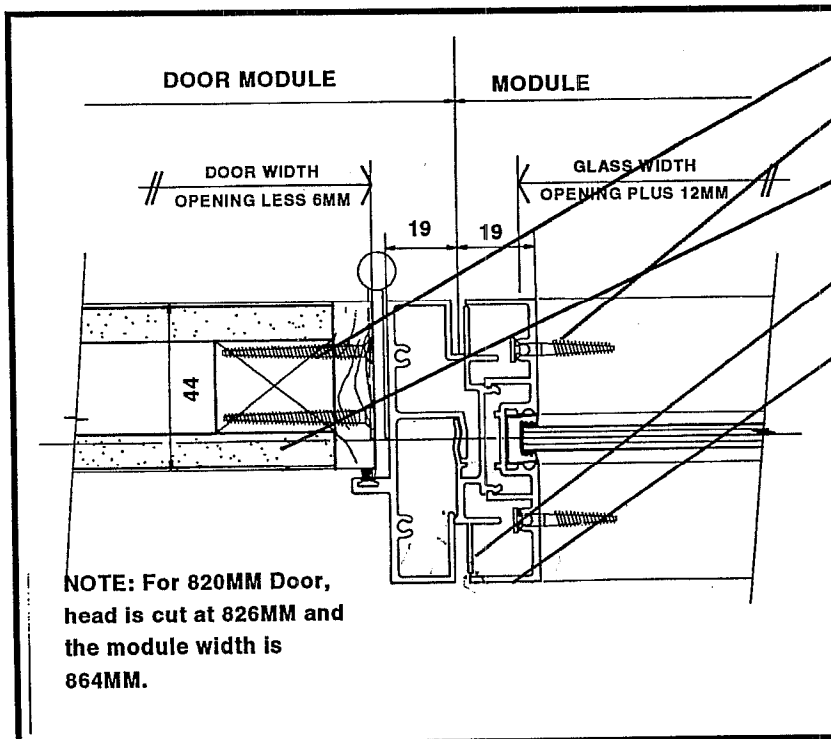
Glazing section  
Extrusion No. U1599 R

Glazing P.V.C.

25mm x 8# C/S screws

# DOOR/GLASS PARTITION JUNCTION

SHEET NO. 15



38mm x 8# Countersunk Screw

25mm x 8# Countersunk Screw

44mm thick hollow core door with  
selected 0.6mm vinyl clad  
architectural finish

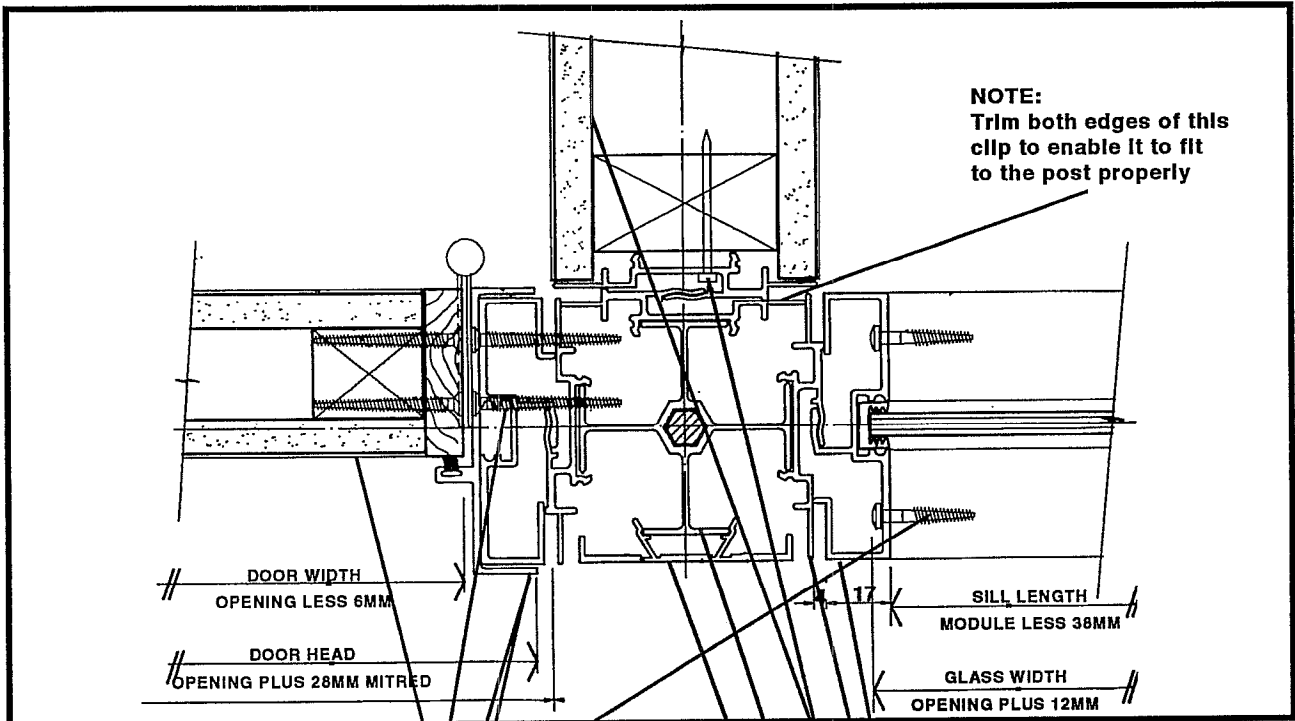
MK10 Aluminium Clip  
Extrusion No. U5829

Aluminium Glazing Section  
Extrusion No. U1599R

NOTE: For 820MM Door,  
head is cut at 826MM and  
the module width is  
864MM.

# 3-WAY JUNCTION DOOR/GLASS/SOLID

SHEET NO. 16



44mm thick hollow core door with selected architectural finish

25mm x 8# Panhead screw

38mm x 8# countersunk screw

Door jamb screw fixed to vertical transom (at hinge locations)  
Extrusion No. U0458

**NOTE:**  
Only use this extrusion when there is a glass infill above door

**NOTE:**  
Door jamb is mitred with door head. Refer to page 8.

Glazing section  
Extrusion No. U4385

MK10 Aluminium clip  
Extrusion No. U5829

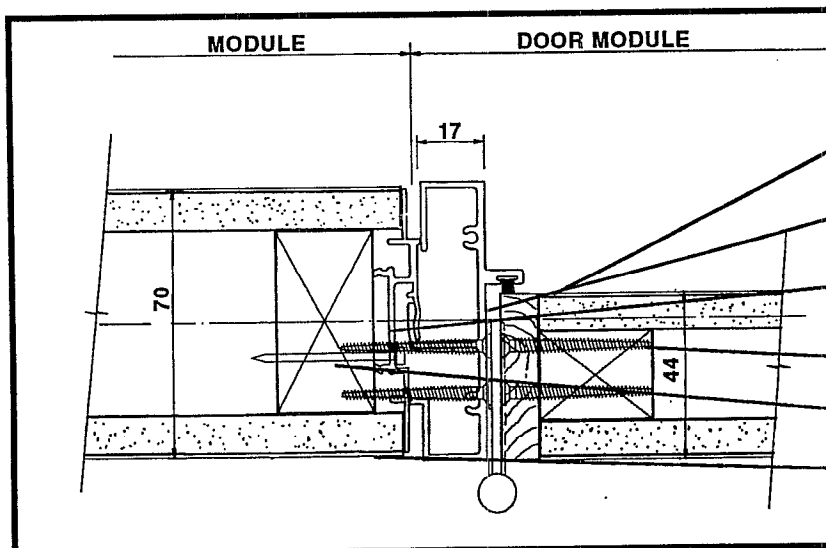
10mm Plasterboard with selected architectural finish

38mm Process nails fixed at approx. 400mm c.t.s.

Corner post  
Extrusion No. U7633

Aluminium post cover  
Extrusion No. U7625

# DOOR/SOLID PARTITION JUNCTION



SHEET NO. 17

44mm thick hollow core door with selected architectural finish

Aluminium door jamb  
Extrusion No. U2021-R

MK10 Aluminium clip  
Extrusion No. U5829

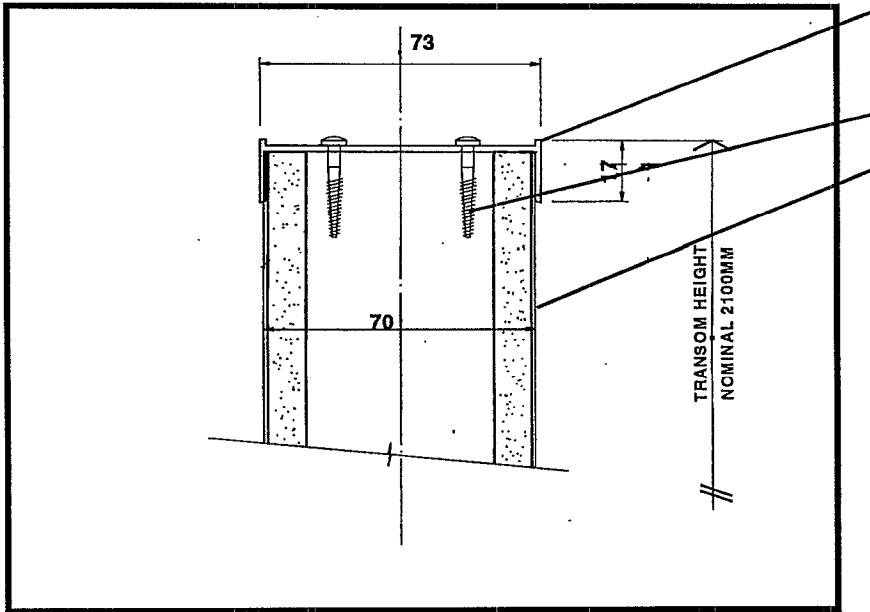
38mm x 8# Countersunk screw

38mm Process nail

10mm Plasterboard with selected architectural finish

## TRANSOM HEIGHT-SOLID PANEL

SHEET NO. 18



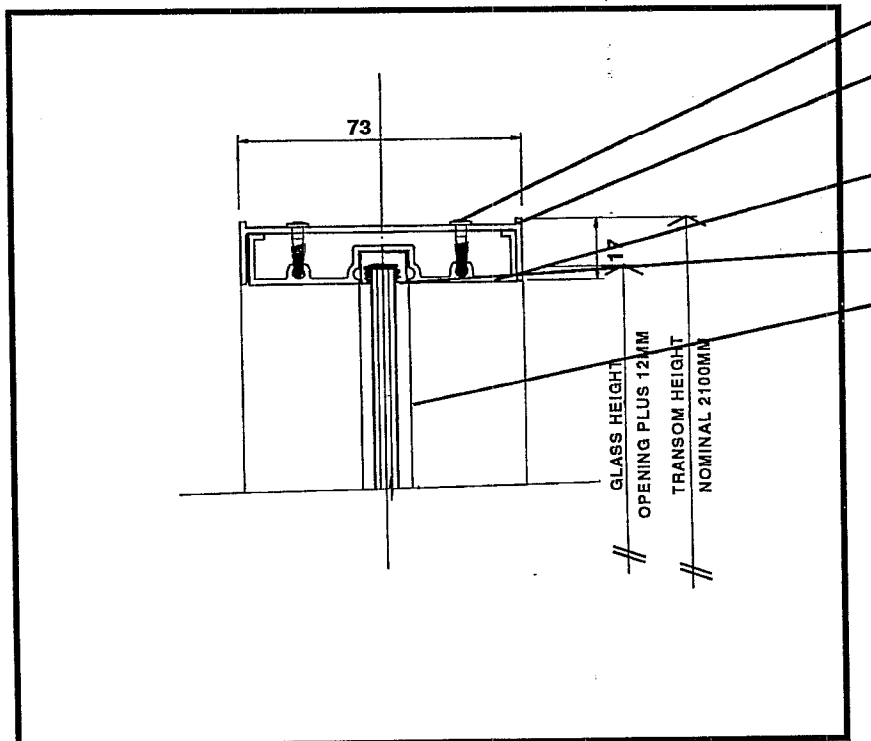
Aluminium head channel as panel trim  
Extrusion No. T8957-R

25mm x 8# Panhead screw

10mm Plasterboard with selected architectural finish

## TRANSOM HEIGHT-GLAZED PANEL

SHEET NO. 19



10mm x 8# Panhead screw

Aluminium head channel as panel trim  
Extrusion No. T8957R

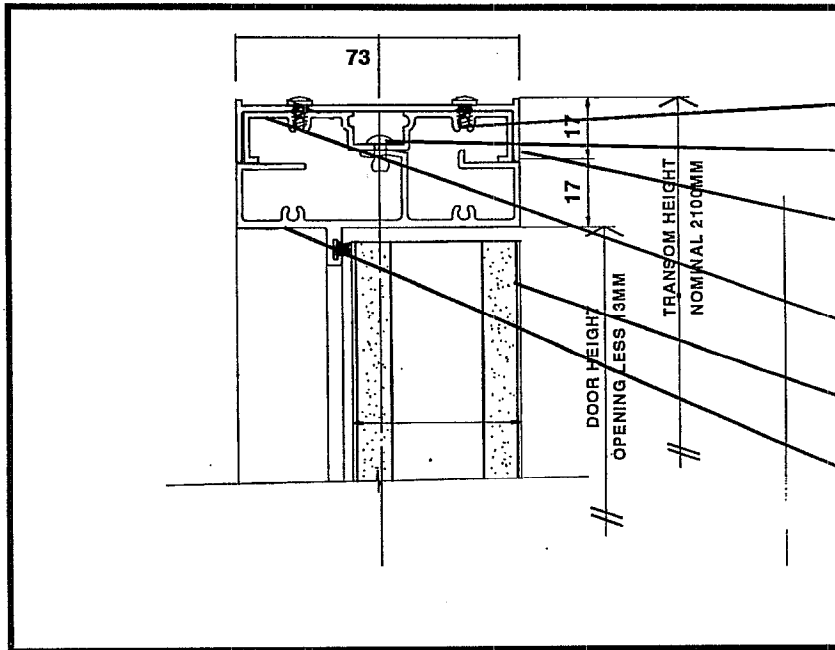
Glazing section  
Extrusion No. T8956R

Glazing P.V.C.

Glass thickness to comply with A.S.1288

# TRANSOM HEIGHT-DOOR JAMB

SHEET NO. 20



10mm x 8# Panhead screw

1/8" Pop rivet to fix glazing section to door jamb

Aluminium head channel as panel trim  
Extrusion No. T8957-R

Glazing section  
Extrusion No. T8956-R

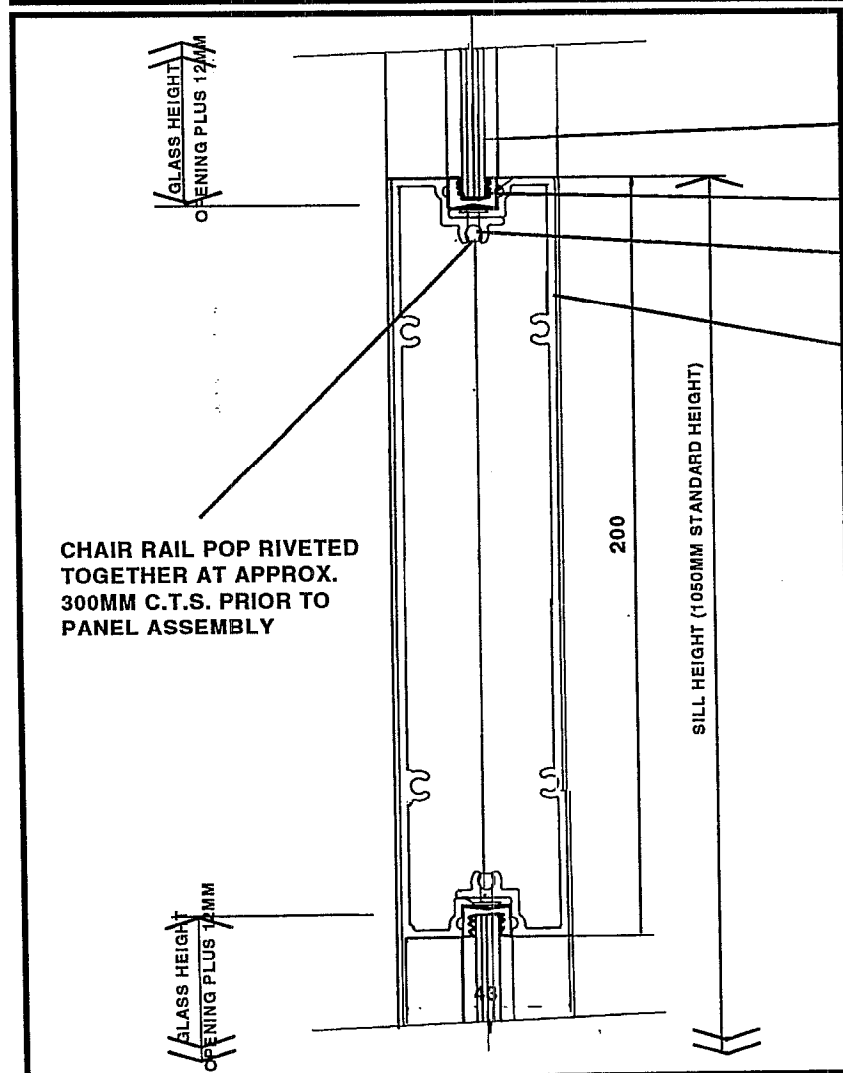
44mm thick hollow core door with selected architectural finish

Door jamb  
Extrusion No. U2021-R

**NOTE:**  
Door head is butted with door jams when using extrusion 2021-R. Refer to page 7.

# CHAIR RAIL

SHEET NO. 21



Glass thickness to comply with A.S. 1288

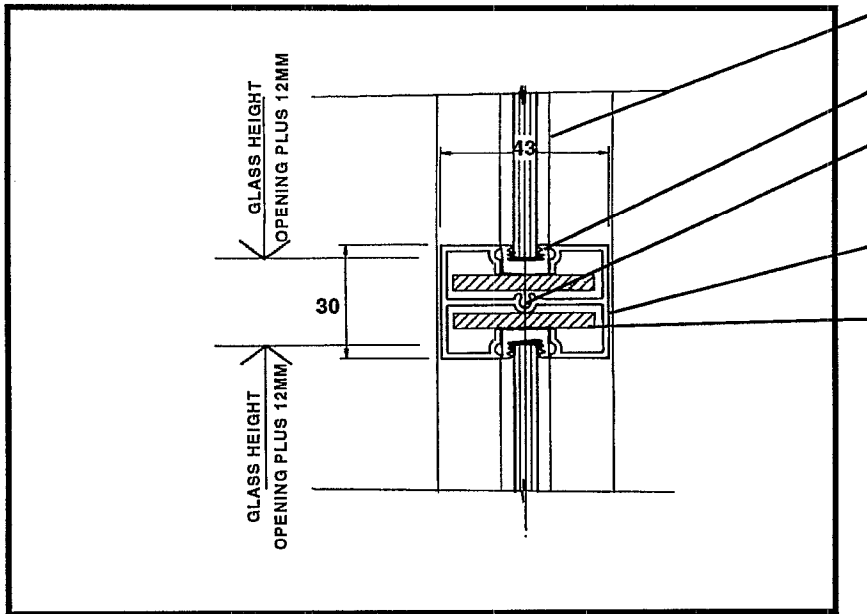
Glazing P.V.C.

Chair rails fixed to vertical glazing section with 25mm x 10# panhead screws

Aluminium self mating chair rails  
Extrusion No. U1659R

## ALTERNATIVE GLAZING TRANSOM DETAILS

SHEET NO. 22



Glass thickness to comply with A.S. 1288

Glazing P.V.C.

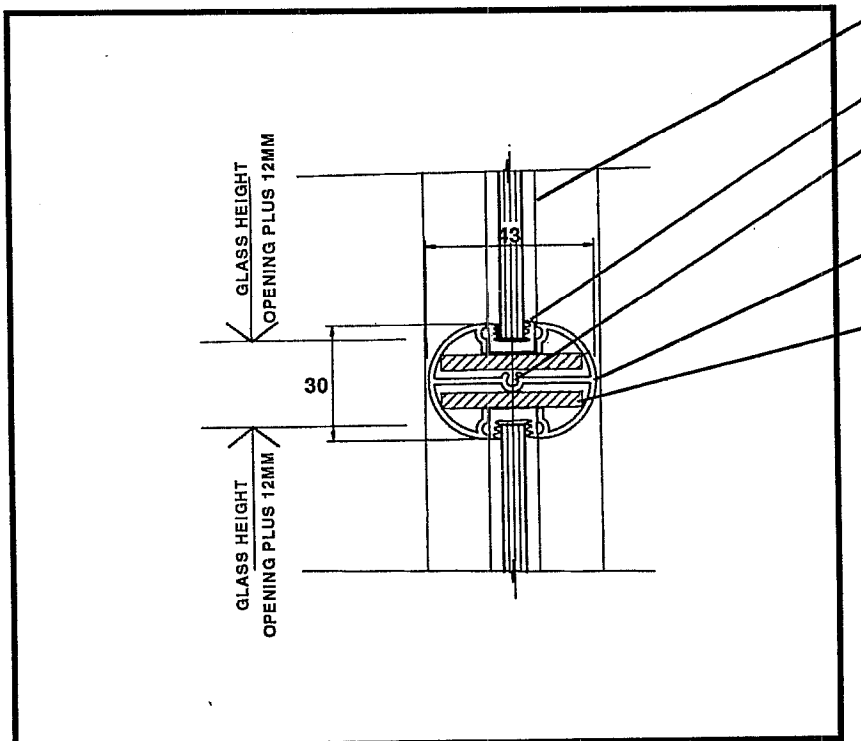
Glazing transom fixed to vertical glazing sections with 25mm x 8# panhead screws

"Square" glazing transom Extrusion No. U1041R

4 x 37mm Timber packer

## ALTERNATIVE GLAZING TRANSOM DETAILS

SHEET NO. 22a



Glass thickness to comply with A.S. 1288

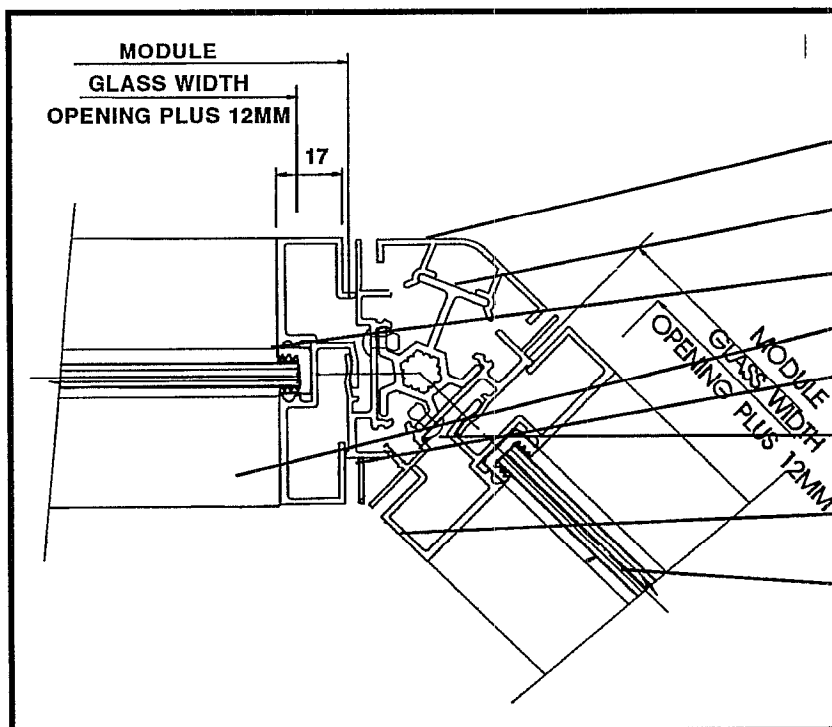
Glazing P.V.C.

Glazing transom fixed to vertical glazing sections with 25mm x 8# panhead screws

"Round" glazing transom Extrusion No. U2966

4 x 37mm Timber packer





Aluminium Post Cover  
Extrusion No. U7661

135° Aluminium Post  
Extrusion No. U7655

Glazing P.V.C.

25mm x 8# Panhead Screws

MK10 Aluminium Clip

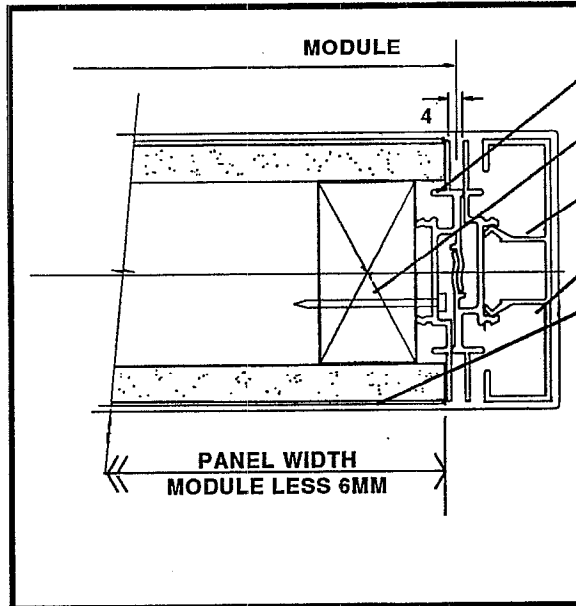
1/8" Pop Rivets fixed at approx.  
30mm c.t.s.

Aluminium Glazing Section  
Extrusion No. U4385

Glass thickness to comply  
with AS 1288

# STOP END DETAIL

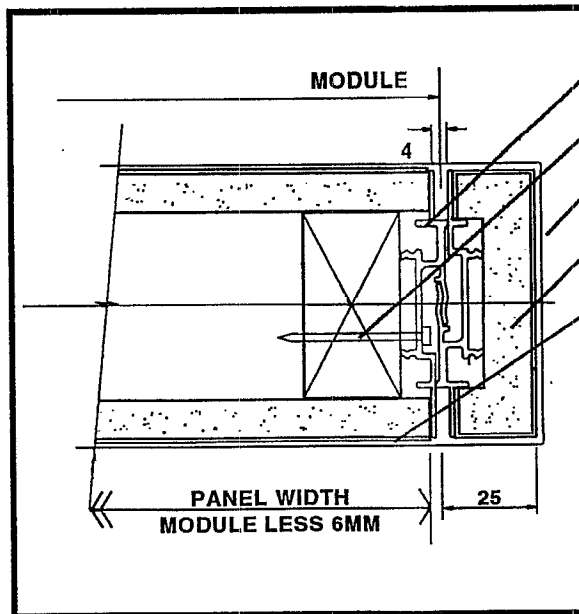
SHEET NO. 24



- MK10 Aluminium Clip  
Extrusion No. U5829
- 38mm Process Nail
- Square Capping  
Extrusion No. U6074
- Line of Skirting below
- 10mm Plasterboard with  
selected architectural finish

# ALTERNATIVE STOP END DETAIL

SHEET NO. 24a



- MK10 Aluminium Clip  
Extrusion No. U5829
- 38mm Process Nail
- Line of Skirting below
- 22 x 70mm M.D.F. with  
selected architectural finish
- 10mm Plasterboard with  
selected architectural finish